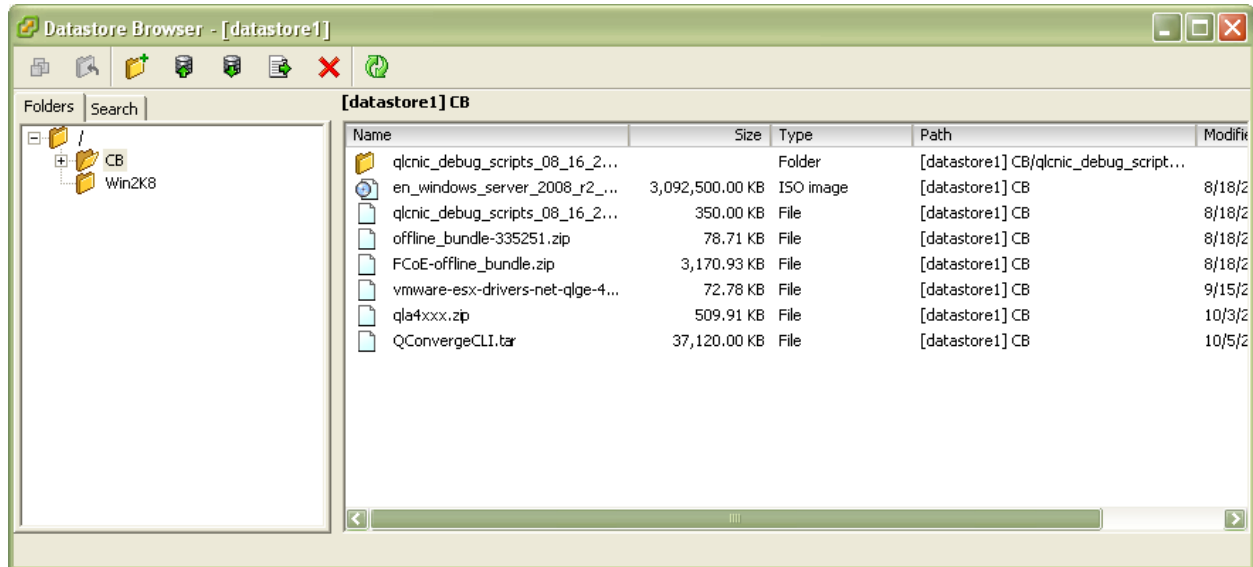


Procedure to Install and run QCC CLI application in ESXi 4.x and ESXi 5.0

1. Upload the enclosed tar file to the ESXi host via vSphere, Summary Tab, right click the desired datastore and select Browse Datastore. The following applet comes up: Click the upload icon to upload the QConvergeCLI.tar file to the datastore:



2. Connect to this ESXi host via Putty session or enter commands directly via the ESXi console by hitting Alt F1 to access the command line:

Example shows Putty Session:

```
# ssh <ip address of ESXi host>
```

Tech Support Mode may be disabled by an administrative user.

Please consult the ESXi Configuration Guide for additional important information.

3. Change directory to the location of where the QConvergedCLI.tar file is located:

```
# cd /vmfs/volumes/datastore1
```

```
/vmfs/volumes/4caf91d9-b0382672-186e-00304866f5a1 # ls
```

CB

```
vmware-esx-drivers-net-qlge-400.1.0.0.47-1OEM.x86_64.vib
```

```
/vmfs/volumes/4caf91d9-b0382672-186e-00304866f5a1 # cd CB
```

```
/vmfs/volumes/4caf91d9-b0382672-186e-00304866f5a1/CB # ls
```

FCoE-offline_bundle.zip

qlcnic_debug_scripts_08_16_2011

QConvergeCLI.tar

qlcnic_debug_scripts_08_16_2011.tar

vmware-esx-drivers-net-qlge-400.1.0.0.47-1OEM.x86_64.vib

4. Untar the QconvergeCLI.tar file

```
/vmfs/volumes/4caf91d9-b0382672-186e-00304866f5a1/CB # tar xvf QConvergeCLI.tar
```

5. Change Directory to the opt/Qlogic_Corporation/QConvergeConsoleCLI/lib/ia32/2.6

directory in preparation for exporting the QCC library:

```
/vmfs/volumes/4caf91d9-b0382672-186e-00304866f5a1/CB # cd  
opt/Qlogic_Corporation/QConvergeConsoleCLI/lib/ia32/2.6
```

=====OR enter the following:=====

```
/vmfs/volumes/4caf91d9-b0382672-186e-00304866f5a1/CB/opt # cd QLogic_Corporation
```

```
/vmfs/volumes/4caf91d9-b0382672-186e-00304866f5a1/CB/opt/QLogic_Corporation # cd  
QConvergeConsoleCLI
```

```
/vmfs/volumes/4caf91d9-b0382672-186e-  
00304866f5a1/CB/opt/QLogic_Corporation/QConvergeConsoleCLI # ls
```

adapters.properties	iscli	scli-exitcodes.txt
qaucli	lib.tgz	iscsi_contents.dat
agent.properties	nic_contents.dat	netscli
flashcfg.properties	fc_contents.dat	nvrामdefs
lib	iscli.cfg	scli
netscli.cfg	menu.properties	
cli.properties	npar_contents.dat	

```
/vmfs/volumes/4caf91d9-b0382672-186e-  
00304866f5a1/CB/opt/QLogic_Corporation/QConvergeConsoleCLI # cd lib
```

```
/vmfs/volumes/4caf91d9-b0382672-186e-00304866f5a1/CB/opt/QLogic_Corporation/QConvergeConsoleCLI/lib # cd ia32
```

```
/vmfs/volumes/4caf91d9-b0382672-186e-00304866f5a1/CB/opt/QLogic_Corporation/QConvergeConsoleCLI/lib/ia32 # cd 2.6
```

6. Export the complete library path:

```
cd /vmfs/volumes/4caf91d9-b0382672-186e-00304866f5a1/CB/opt/QLogic_Corporation/QConvergeConsoleCLI/lib/ia32/2.6 #
```

```
export LD_LIBRARY_PATH=`pwd` (use `(unshift ~) not '
```

===== OR Enter the following:=====

```
# export LD_LIBRARY_PATH=/vmfs/volumes/4caf91d9-b0382672-186e-00304866f5a1/CB/opt/QLogic_Corporation/QConvergeConsoleCLI/lib/ia32/2.6
```

7. Launch QCC CLI from the QConvergeConsoleCLI directory:

```
vmfs/volumes/4caf91d9-b0382672-186e-00304866f5a1/CB/opt/QLogic_Corporation/QConvergeConsoleCLI/lib/ia32/2.6 # cd ../../..
```

```
/vmfs/volumes/4caf91d9-b0382672-186e-00304866f5a1/CB/opt/QLogic_Corporation/QConvergeConsoleCLI # ./qaucli
```

The CLI utility launches:

Scanning QLogic FC HBA(s) and device(s), please wait...

Warning: PrefOpenPreferenceFile: Failed to open preference file (/etc/agent.properties).

QCC CLI Procedure to Configure the ISCSI Function VLAN ID

QConvergeConsole

CLI - Version 1.0.0 (Build 75)

Main Menu

- 1: Adapter Information
- 2: Adapter Configuration
- 3: Adapter Updates
- 4: Adapter Diagnostics
- 5: Adapter Statistics
- 6: Refresh
- 7: Help
- 8: Exit

Please Enter Selection: 2

QConvergeConsole

CLI - Version 1.0.0 (Build 75)

Adapter Type Configuration Selection

- 1: CNA Configuration

(p or 0: Previous Menu; m or 98: Main Menu; ex or 99: Quit)

Please Enter Selection: 1

QConvergeConsole

CLI - Version 1.0.0 (Build 75)

Converged Network Adapter (CNA) Protocol Type Selection

1: CNA FCoE Configuration

2: CNA iSCSI Configuration

(p or 0: Previous Menu; m or 98: Main Menu; ex or 99: Quit)

Please Enter Selection: 2

QConvergeConsole

CLI - Version 1.0.0 (Build 75)

Converged Network Adapter (CNA) iSCSI Configuration

1: HBA Level Parameter Configuration

2: Port Configuration

3: Port IP Settings

4: Target Configuration

5: Boot Devices Configuration

6: Export (Save) Configuration

(p or 0: Previous Menu; m or 98: Main Menu; ex or 99: Quit)

Please Enter Selection: 2

QConvergeConsole

CLI - Version 1.0.0 (Build 75)

Converged Network Adapter (CNA) iSCSI Configuration

CNA Model QLE8242 SN: AFE1030C04294

1. Port 2 [Protocol(s): FCoE iSCSI]

WWPN: 21-00-00-0E-1E-04-BE-9F Link Down

iSCSI Name: iqn.2000-04.com.qlogic:isp8214.000E1E04BE9E.5 Link Down

2. Port 1 [Protocol(s): FCoE iSCSI]

WWPN: 21-00-00-0E-1E-04-BE-9B Link Down

iSCSI Name: iqn.2000-04.com.qlogic:isp8214.000E1E04BE9A.4 Link Down

(p or 0: Previous Menu; m or 98: Main Menu; ex or 99: Quit)

Please Enter Selection: 1

QConvergeConsole

CLI - Version 1.0.0 (Build 75)

Port Link Configuration

=====

CNA : 0 Port: 2

SN : AFE1030C04294

CNA Model : QLE8242

iSCSI Name : iqn.2000-04.com.qlogic:isp8214.000E1E04BE9E.5

FW Version : 4.8.20

iSCSI MacAddr : 00:0E:1E:04:BE:9E

IPv4 Address : 172.31.74.218

=====

- 1: Port Link Settings Menu
- 2: Edit Configured Port Settings Menu
- 3: Port Restore Factory Defaults
- 4: BIOS/UEFI Settings Menu

(p or 0: Previous Menu; m or 98: Main Menu; ex or 99: Quit)

Please Enter Selection: 2

QConvergeConsole

CLI - Version 1.0.0 (Build 75)

Port Link Settings Menu

=====

CNA : 0 Port: 2
SN : AFE1030C04294
CNA Model : QLE8242
iSCSI Name : iqn.2000-04.com.qlogic:isp8214.000E1E04BE9E.5
FW Version : 4.8.20
iSCSI MacAddr : 00:0E:1E:04:BE:9E
IPv4 Address : 172.31.74.218

=====

- 1: Display Configured Port Settings
- 2: Change Port iSCSI Alias Name

3: Port Firmware Settings Menu

4: Save changes and reset HBA (if necessary)

(p or 0: Previous Menu; m or 98: Main Menu; ex or 99: Quit)

Please Enter Selection: 3

QConvergeConsole

CLI - Version 1.0.0 (Build 75)

Port Firmware Settings Menu

=====

CNA : 0 Port: 2

SN : AFE1030C04294

CNA Model : QLE8242

iSCSI Name : iqn.2000-04.com.qlogic:isp8214.000E1E04BE9E.5

FW Version : 4.8.20

iSCSI MacAddr : 00:0E:1E:04:BE:9E

IPv4 Address : 172.31.74.218

=====

- 1: Display Configured Port Settings
- 2: Edit A Specific Port Setting
- 3: Configure iSCSI Settings
- 4: Configure Firmware Settings
- 5: Configure Device Settings
- 6: Configure Basic Settings

7: Configure Advanced Settings

8: Configure IPv6 Settings

9: Configure IPv6 TCP Settings

10: Save changes and reset HBA (if necessary)

(p or 0: Previous Menu; m or 98: Main Menu; ex or 99: Quit)

Please Enter Selection: 7

FW_ZIO_Enable_Mode [off] : <hit return to get through the undesired selections unchanged>

AFW_Device_Timeouts [on] : <return>

AFW_Delayed_Ack [off] :

AFW_AutoConnect [on] :

ExeThrottle [0] :

FirstBurstLen [256] :

IP_ARP_Redirect [off] :

VLAN_Enable [off] :on <type the word on>

VLAN_User_Priority [0] :

VLAN_ID [0] :101

IPv4_TOS_ENABLE [off] :

Force_Negotiate_Main_iSCSI_Keys [off] :

iSCSI_Header_Digests [off] :

iSCSI_Data_Digests [off] :

iSCSI_Immediate_Data [on] :

iSCSI_Initial_R2T [off] :

KeepAliveTO [14] :

MaxBurstLen [512] :

MaxOutstandingR2T [1] :

TCP_Time_Stamp [on] :

TCP_Window_Scale [0] :
iSCSI_Name [iqn.2000-04.com.qlogic:isp8214.000E1E04BE9E.5] :
ZIO [0] :
IPv4TOS [0] :
IPv4TTL [64] :
IPv6_TCP_Time_Stamp [on] :
IPv6_TCP_Window_Scale [0] :
IPv6_VLAN_ID [0] :
IPv6_VLAN_User_Priority [0] :
IPv6_VLAN_Enable [off] :
IPv6_Traffic_Class [0] :
IPv6_Hop_Limit [64] (router may override) :
IPv6_ND_Reachable_Timer [30000] (router may override) :
IPv6_ND_Retransmit_Timer [1000] (router may override) :
IPv6_ND_Stale_Timeout [600000] :
IPv6_DAD_Count [1] :
IPv6_MCast_Listnr_Disco_Enable [off] :
P3P_TCP_Max_Window_Size [0] :
AFW_Serlz_Task_Mngmt [off] :
Large_Frames [off] :

Hit <Enter> to continue:

QConvergeConsole

CLI - Version 1.0.0 (Build 75)